

SOUTH WILLIAMSBURG, BROOKLYN NY

225 ROEBLING STREET

MOD



SPACE DETAILS

LOCATION

Roebling Street between South 2nd and South 3rd St

SPACE

Ground: 2,328 SF

Mezzanine: 422 SF

FRONTAGE

100 feet on Roebling & 50 feet on South 3rd St

CEILING HEIGHT

18 Feet

POSSESSION

Immediate

ASKING RENT

Upon Request

CONTACTS

MEYER DAGMY

718-249-3613

m@modcre.com

EDDIE MAMIYE

917-379-6719

e@modcre.com

ISAAC BIJOU

718-594-6377

ib@modcre.com

2774 CONEY ISLAND AVE, BROOKLYN, NY 11235

NEIGHBORS

L'Industrie Pizzeria, PPL Cafe, CTown Supermarket, The Four Horsemen, Serendipity, Traif, McDonalds, Taco Bell, Popeyes, Checkers, Chase, Schweiger Dermatology, Sugar & Bronzed, Ph7, Pies n Thighs

TRANSPORTATION

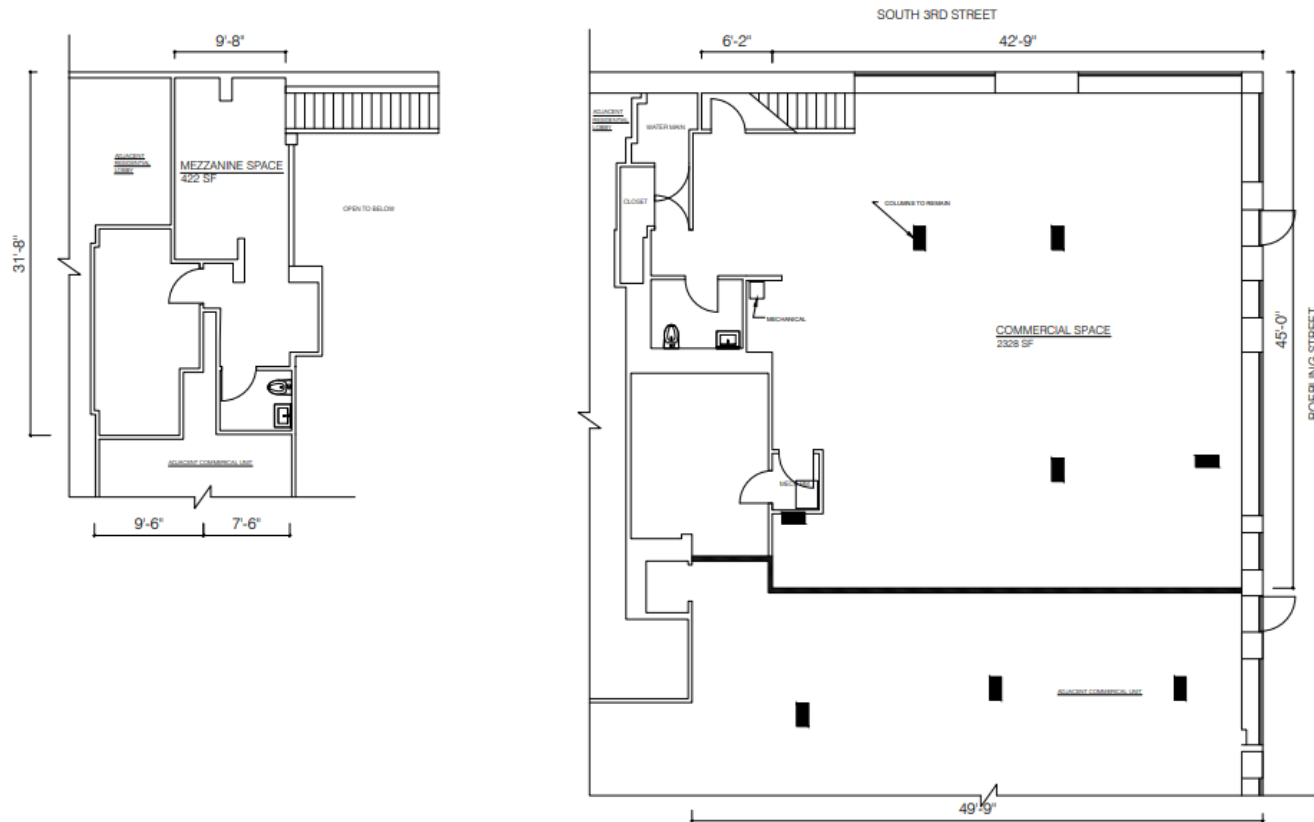


COMMENTS

- Heavy Foot Traffic Corridor in South Williamsburg
- Corner Space
- High Ceilings
- Proximity to Williamsburg Bridge
- Dense Residential Neighborhood
- All Uses Considered



FLOOR PLANS



CONTACTS

MEYER DAGMY

718-249-3613

m@modcre.com

EDDIE MAMIYE

917-379-6719

e@modcre.com

ISAAC BIJOU

718-594-6377

ib@modcre.com

2774 CONEY ISLAND AVE, BROOKLYN, NY 11235

MOD