

EAST NEW YORK, BROOKLYN NY

# 2700 ATLANTIC AVE

MOD



SUPER MARKET FOR LEASE

# SPACE DETAILS

## LOCATION

Atlantic Ave between Vermont St & Wyona St

## SPACE

Ground Floor: 15,000 SF

## ADDITIONAL SPACE

Second Floor: 15,000 SF (Parking)

Lower Level: 10,000 SF (Storage or Retail)

## ASKING RENT

\$40 PSF

## FRONTAGE

186 feet on Atlantic Ave

## POSSESSION

Q3 2024

## CONTACTS

MEYER DAGMY

718-249-3613

m@modcre.com

EDDIE MAMIYE

917-379-6719

e@modcre.com

2774 CONEY ISLAND AVE, BROOKLYN, NY 11235

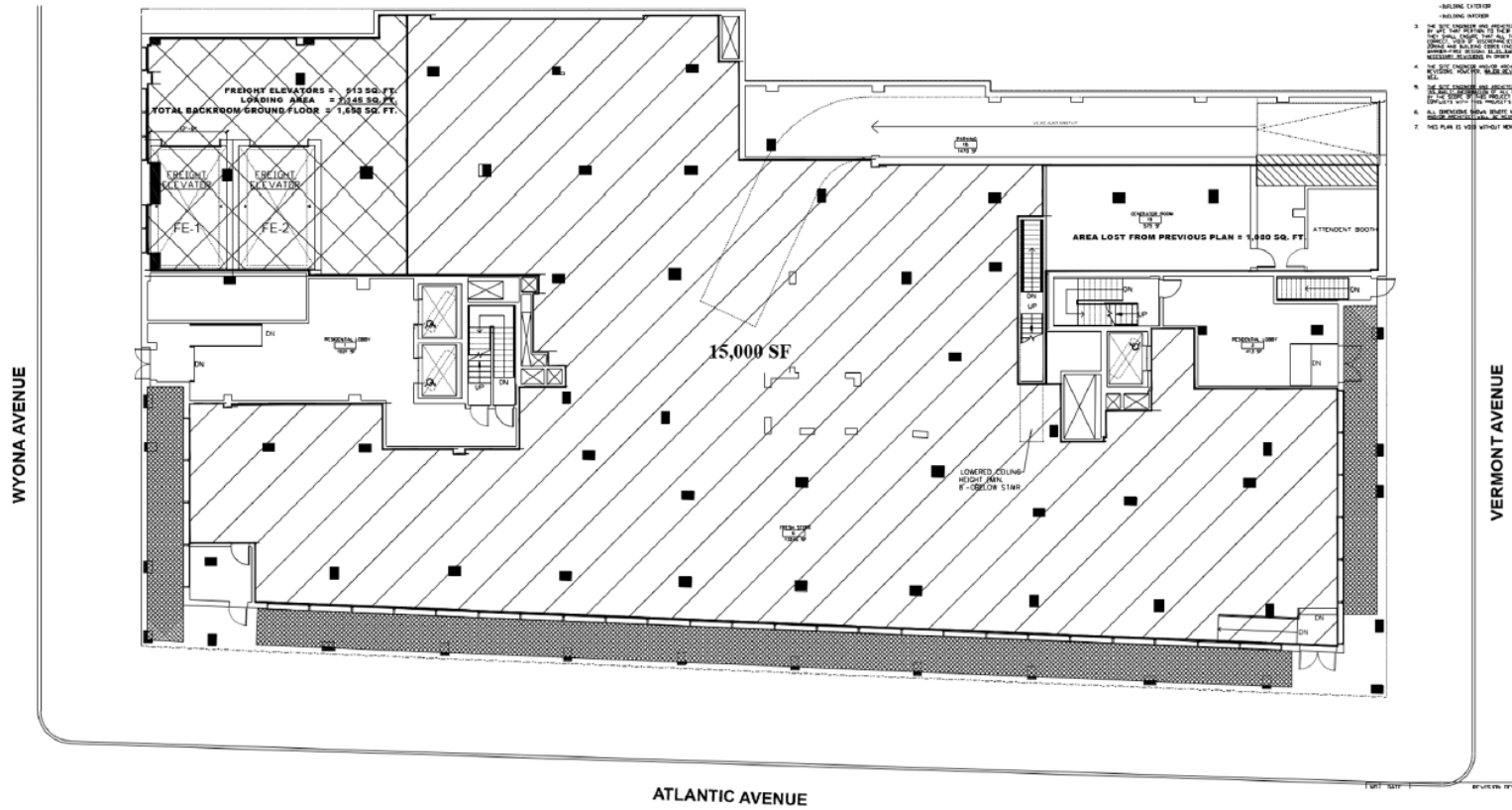
## TRANSPORTATION



## COMMENTS

- New Construction
- Base of 230 Apartments
- Block-Through Retail with Second Floor and Lower Level Space
- Fresh Program for Qualified Supermarkets
- Sprinklers Installed
- High Ceilings
- Logical Divisions Considered
- Heavy Foot Traffic Corridor
- Dense Residential Neighborhood in East New York

# FLOOR PLANS



## CONTACTS

MEYER DAGMY

718-249-3613

m@modcre.com

EDDIE MAMIYE

917-379-6719

e@modcre.com

2774 CONEY ISLAND AVE, BROOKLYN, NY 11235

MOD