

FLATBUSH, BROOKLYN, NY

885 ROGERS AVENUE

MOD



ADDITIONAL PHOTO



CONTACTS

MEYER DAGMY

718-249-3613

m@modcre.com

EDDIE MAMIYE

917-379-6719

e@modcre.com

JACK DAGMY

718-249-3614

j@modcre.com

2774 CONEY ISLAND AVE, BROOKLYN, NY 11235



SPACE DETAILS

LOCATION

Southeast corner of Snyder and Rogers Avenues

SPACE

Ground Floor: 6,296 SF

FRONTAGE

200 Feet

TERM

Long Term

POSSESSION

Immediate

ASKING RENT

Upon Request

NEIGHBORS

Target, CVS, Food Bazaar, Chai Care, City MD, Old Navy, Planet Fitness, iHop, AT&T, Popeyes, Associates Supermarket, Wing Stop, McDonald's, Burlington, Rite Aid, Chase, Citibank, Snipes, and Kings County Hospital

TRANSPORTATION



COMMENTS

- 6,296 SF of flexible space.
- Combine or divide spaces as needed.
- 25-year tax abatement available.
- Snyder Ave entrance with two elevators.
- On-site parking for tenants and visitors.
- 100+ residential units nearby.
- Direct lobby access to parking.
- Landlord offers custom build-outs.
- Modern space with supportive landlord.

CONTACTS

MEYER DAGMY

718-249-3613

m@modcre.com

EDDIE MAMIYE

917-379-6719

e@modcre.com

JACK DAGMY

718-249-3614

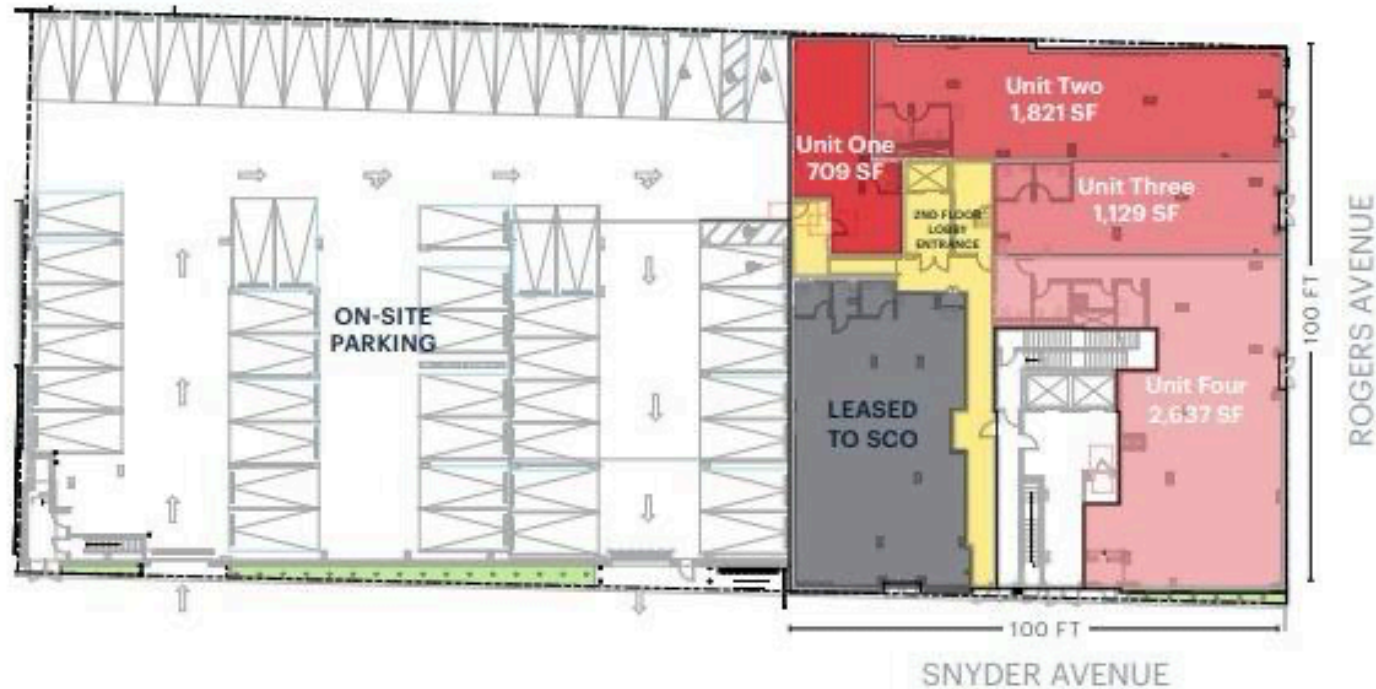
j@modcre.com



2774 CONEY ISLAND AVE, BROOKLYN, NY 11235

FLOOR PLAN

GROUND FLOOR - RETAIL, OFFICE, MEDICAL SPACE



CONTACTS

MEYER DAGMY

718-249-3613

m@modcre.com

EDDIE MAMIYE

917-379-6719

e@modcre.com

JACK DAGMY

718-249-3614

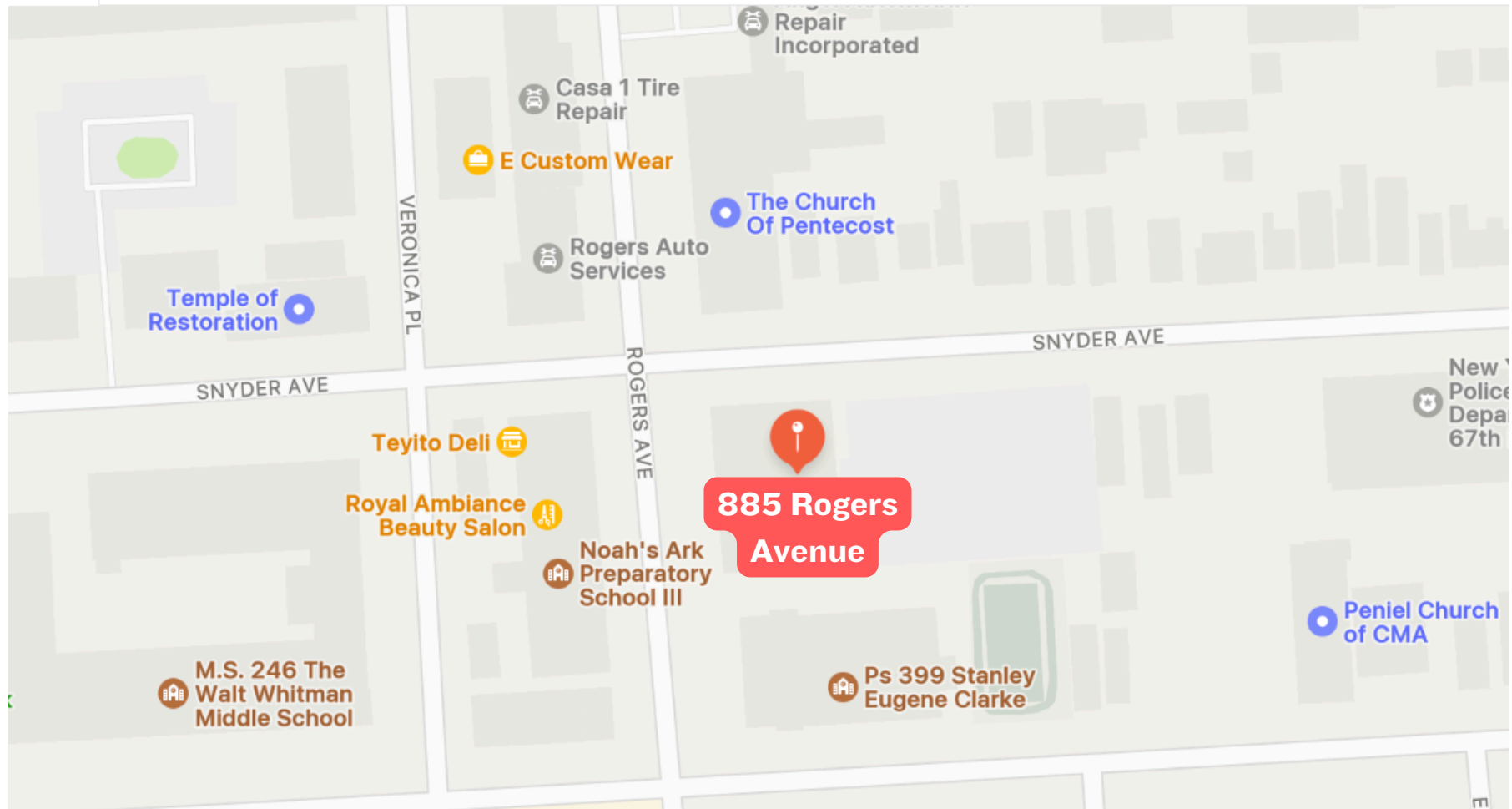
j@modcre.com

MOD

2774 CONEY ISLAND AVE, BROOKLYN, NY 11235

© 2024 MOD Commercial Realty LLC. All information provided is deemed reliable, but is not guaranteed and should be independently verified.

AREA RETAIL



CONTACTS

MEYER DAGMY

718-249-3613

m@modcre.com

EDDIE MAMIYE

917-379-6719

e@modcre.com

JACK DAGMY

718-249-3614

j@modcre.com



2774 CONEY ISLAND AVE, BROOKLYN, NY 11235