

FOR LEASE

KALMON DOLGIN AFFILIATES INC.



**237 Russell Street
Brooklyn, NY 11222**

**10,000 SQ FT PRIME INDUSTRIAL
WAREHOUSE FOR LEASE**

**Ideal for Warehouse Distribution,
Set Design, Film Industry,
Construction, Fabrication,
Woodworking.**

Property Overview

10,000 Sq. Ft. Warehouse

23' Ceiling Heights

2 Drive-In Doors

Heavy Power

Gas Heat Blowers

500 SF of Offices

Overhead Crane

Prime Greenpoint Location

**Easy Access to Manhattan, Queens, Long
Island.**

**Pricing
Available
Upon
Request**

EXCLUSIVE BROKERS:

Jeff Unger

347-390-1114 (Direct)

917-971-0995 (Cell)

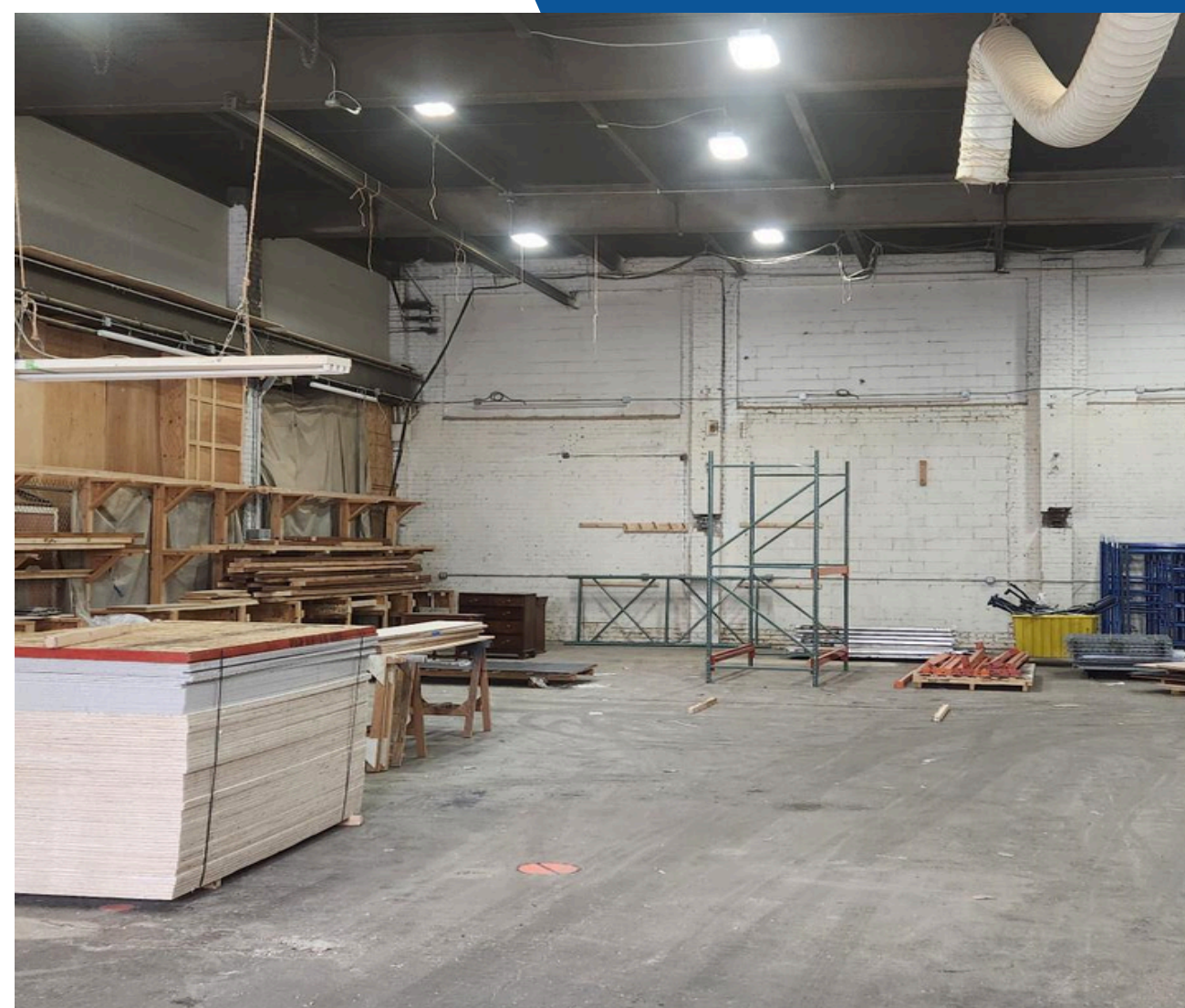
Junger@kalmondolgin.com

Robert Klein

347-390-1124 (Direct)

732-533-9511 (Cell)

RKlein@kalmondolgin.com



FOR LEASE

KALMON DOLGIN AFFILIATES INC.

Available October 1, 2025

**10,000 SQ FT PRIME INDUSTRIAL
WAREHOUSE FOR LEASE**



**237 Russell Street
Brooklyn, NY 11222**

TRANSPORTATION

NASSAU AVENUE



BROOKLYN QUEENS
EXPRESSWAY & LIE



MIDTOWN
TUNNEL



WILLIAMSBURG
BRIDGE



B24:
GREENPOINT AVE/
HUMBOLT STREET



**Pricing
Available
Upon
Request**

EXCLUSIVE BROKERS:

Jeff Unger

347-390-1114 (Direct)

917-971-0995 (Cell)

Junger@kalmondolgin.com

Robert Klein

347-390-1124 (Direct)

732-533-9511 (Cell)

RKlein@kalmondolgin.com

