

VERADA

168 Banker Street

Greenpoint

Prime New Development
Opportunity



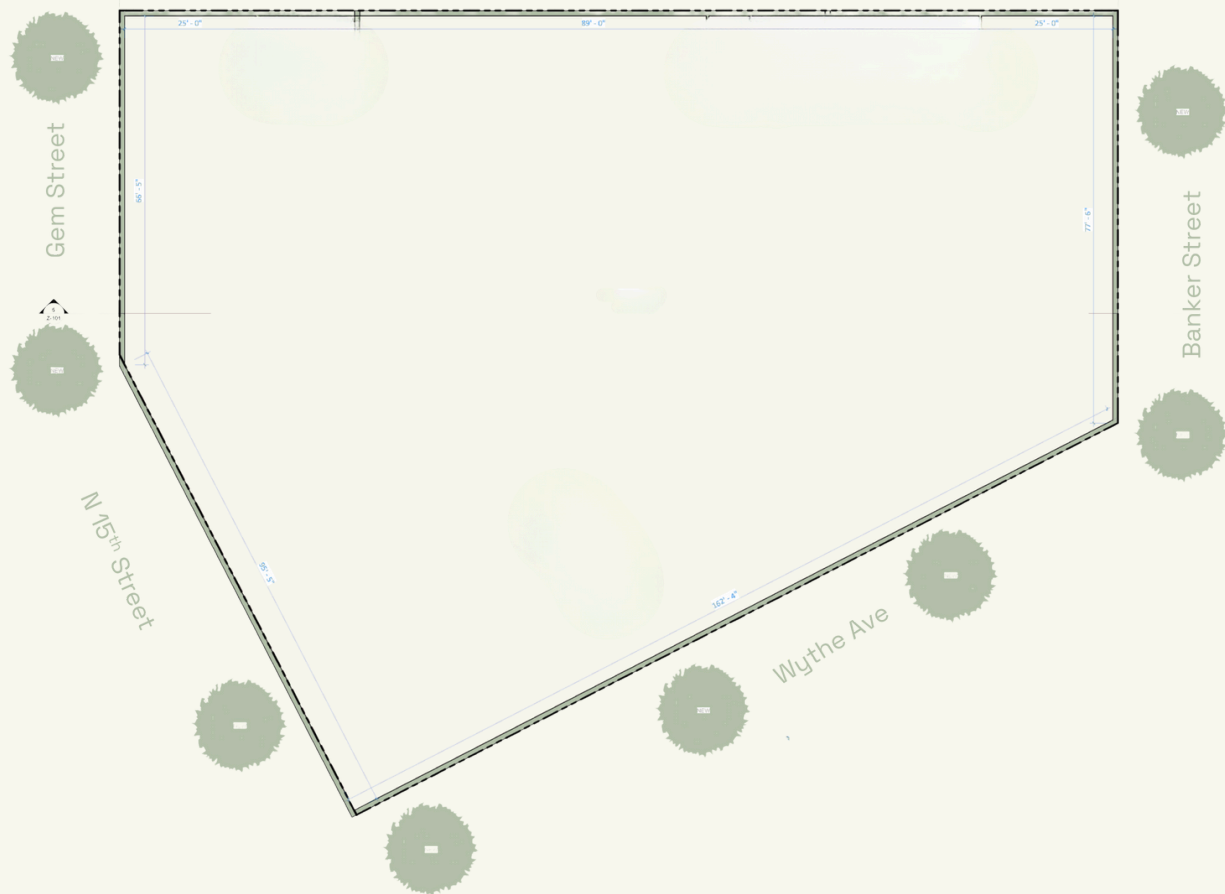
Situated in the heart of Greenpoint, 168 Banker Street is a brand-new four-story commercial development offering over 86,000 SF of flexible space ideal for flagship retail, creative office, or experiential concepts. Directly across from Brooklyn Brewery's future headquarters at 1 Wythe Avenue, this location sits at the center of one of Brooklyn's most exciting emerging districts.

Each floor spans approximately 21,699 SF with ceiling heights ranging from 18 to 20 feet. The building also features a 10,000+ SF private roof deck with panoramic views of the East River, Williamsburg Bridge, and Manhattan skyline.

With open layouts, oversized windows, and a striking modern-industrial design, 168 Banker offers the visibility, flexibility, and character today's brands seek. The neighborhood is rapidly evolving, anchored by Brooklyn Brewery's 41,000 SF facility, Acme Smoked Fish's new 18,000 SF offices, and the recently signed Skyway Trampoline Park at 29 Wythe Avenue. A short walk to the Nassau Avenue G train and steps from McCarren and Bushwick Inlet Parks, the building combines excellent access with unmatched neighborhood energy.

Available Summer 2026, 168 Banker Street is an ideal opportunity for tenants looking to be part of Greenpoint's next chapter.

[View Listing >](#)



Total Square Footage	86,000 SF
Ground Floor - 4th Floor	21,699 SF
Exclusive Roof Deck	10,000 SF
Ceiling Height - Ground Floor	20 FT
Ceiling Height - Second Floor	20 FT
Ceiling Height - Third Floor	18 FT
Ceiling Height - Fourth Floor	18 FT
Market Concessions	Ownership open to build out
Architectural Highlights	Open layouts, ample light, and strong street presence
Completion	Summer 2026
Strong Co-tenancy	Brooklyn Brewery, Acme Smoked Fish, & Skyway Trampoline Park

[View Listing >](#)



[View Listing >](#)



Neighborhood Description:

- Prime Greenpoint Location – Situated near the Brooklyn waterfront in a fast-evolving commercial corridor.
- Major Developments Nearby – Directly across from Brooklyn Brewery’s new 41,000 SF HQ and Acme Smoked Fish’s 18,000 SF offices.
- Entertainment Momentum – Skyway Trampoline Park’s new 30,000 SF facility adds family and lifestyle traffic to the area.
- Parks & Recreation – Just steps from Bushwick Inlet Park and a short walk to McCarren Park.
- Transit Connectivity – 5-minute walk to the Nassau Ave G train and close to Citi Bike stations for easy access across Brooklyn and Manhattan.

[View Listing >](#)

Nate Mallon
nm@veradaretail.com
 860-416-7288

Brendan Thrapp
bt@veradaretail.com
 201-787-9679

Kate Gottlieb
kg@veradaretail.com
 818-636-2355

VERADA
veradaretail.com