

VERADA

50 Greene Ave

Fort Greene

Prime Community
Facility Opportunity



Excellent community facility opportunity in the heart of Fort Greene, Brooklyn.

50 Greene Avenue offers 2,500 SF of newly built, ground-floor space, perfect for medical, educational, or nonprofit/community use. The flexible layout includes five split HVAC systems, three restrooms, ADA compliance, and abundant natural light—ready for immediate occupancy.

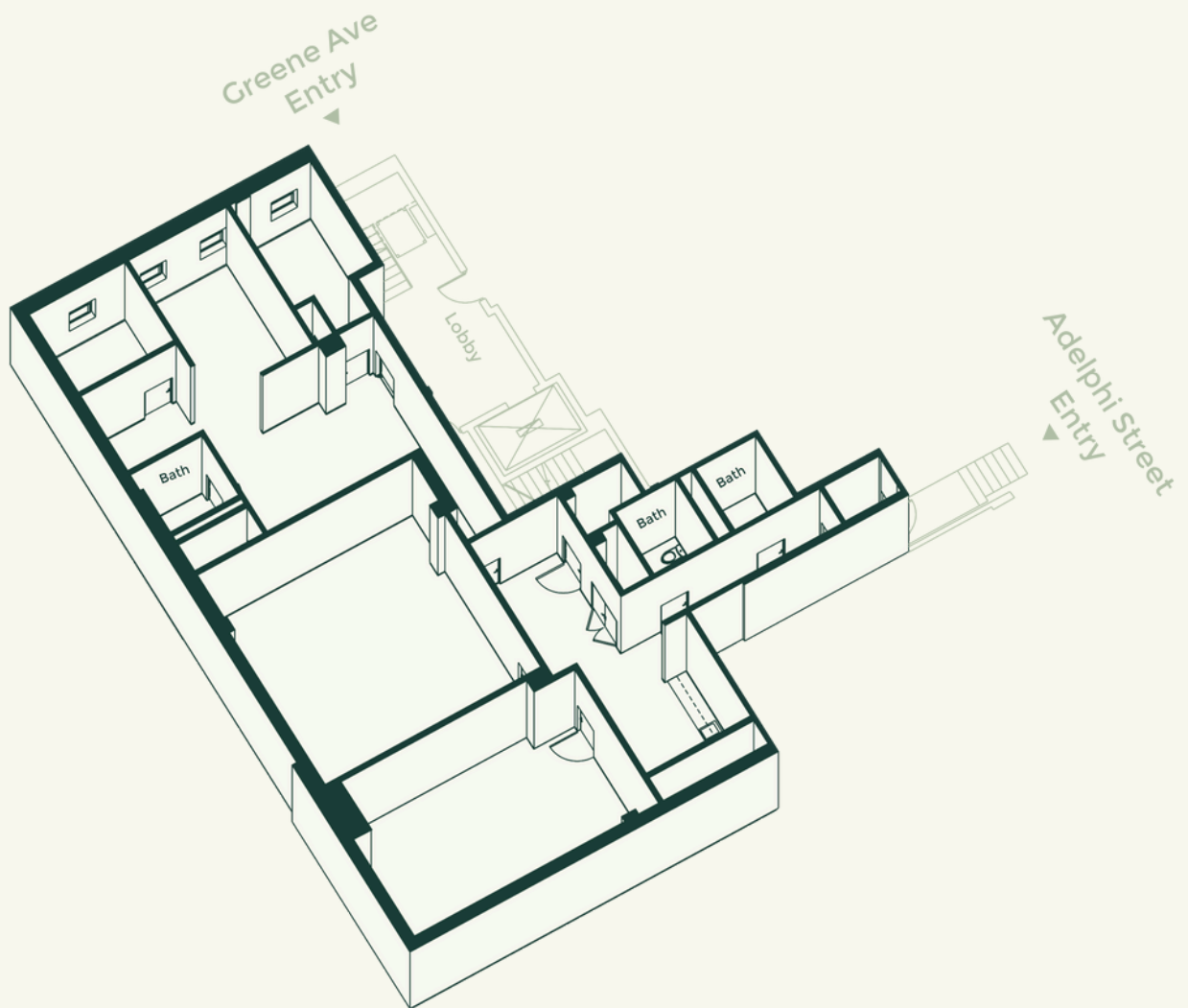
Ideally situated at the corner of Adelphi Street and Carlton Avenue, this space is surrounded by Brooklyn's leading cultural institutions, schools, and high-density residential buildings. With access to the 2, 3, 4, 5, B, Q, C, and G trains, it's positioned in one of Brooklyn's most transit-rich neighborhoods.

This is a prime opportunity to serve a vibrant and growing community in Brooklyn's premier cultural district.

[View Listing >](#)



[View Listing >](#)



Total Square Footage	2,500 SF
-----------------------------	----------

Space Position	Corner
-----------------------	--------

Features	Three bathrooms HVAC ADA compliance
-----------------	---

Use	Community Facility Only
------------	-------------------------

Available	Immediate possession; furniture available
------------------	---

Market Concessions	Ownership will provide market concession for qualified tenant
---------------------------	---

[View Listing >](#)



Neighborhood Description:

- Heart of Fort Greene – Located in Brooklyn’s cultural epicenter, known for its vibrant community and rich architectural character.
- Situated at Greene Avenue & Adelphi Street
- Parks & Green Space – Just blocks from the 30-acre Fort Greene Park, offering sprawling lawns, sports courts, and year-round programming.
- Subway: Steps from 2, 3, 4, 5, B, Q, C, G trains

[View Listing >](#)

Nate Mallon
nm@veradaretail.com
 860-416-7288

David Dubinsky
david@veradaretail.com
 718-308-7111

Brendan Thrapp
bt@veradaretail.com
 201-787-9679

Aidan O’Connor
ao@veradaretail.com
 443-537-8114

VERADA
veradaretail.com