

189 AVENUE C


ARA

Marc Joseph
347.569.2267
marc@arany.com

Aaron Aziz
516.355.8018
aaron@arany.com

**RETAIL
SPACE
FOR
LEASE**

646.885.7274
@ARANYC
WWW.ARANYC.COM

**CALL
FOR
INFO**

646.
885.
7274


ARA

**RETAIL
SPACE
FOR
LEASE**

2500 SF


@ARANYC
WWW.ARANYC.COM

DETAILS

189 AVENUE C

SIZE

2,100 SF Ground Floor +
400 SF Separate Storage

ASKING RENT

Upon Request

CROSS STREET

Between East 11th & East 12th Street

SPECS

- Prime Alphabet City
- 15-Foot Ceilings
- 27 Feet of Frontage
- Steps from Stuytown
- All Uses Considered

NEIGHBORS

- Tompkins Square Bagels • East Village Pharmacy
- CTown Supermarket • Key Food Supermarket
- Dunkin' • McDonald's • Starbucks • CVS Pharmacy
- Walgreens • Chase Bank • TD Bank • B Cup Café
- Book Club Bar • The Wayland • Niagara Bar
- Lucky • Van Leeuwen Ice Cream • Veselka

NEARBY TRANSIT

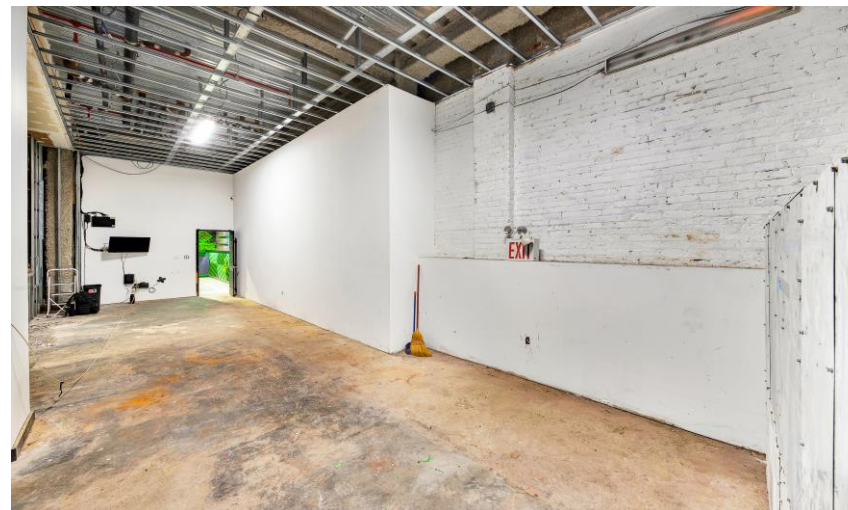
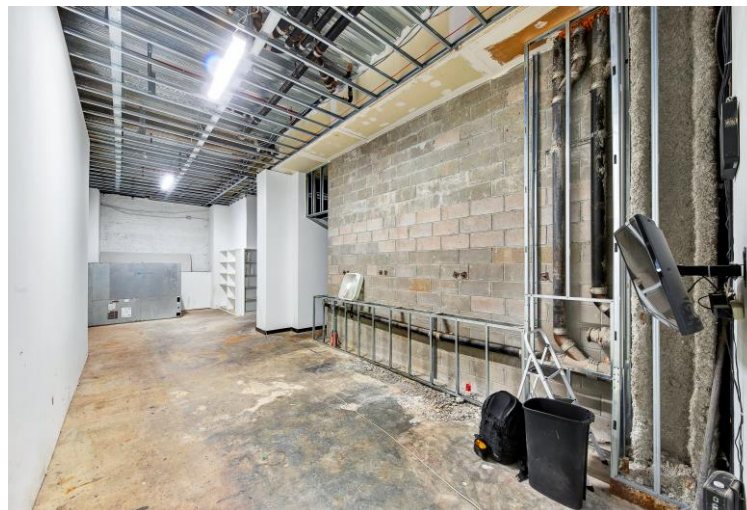
 L Train (1st Ave) |  M14D-SBS  M8  M9



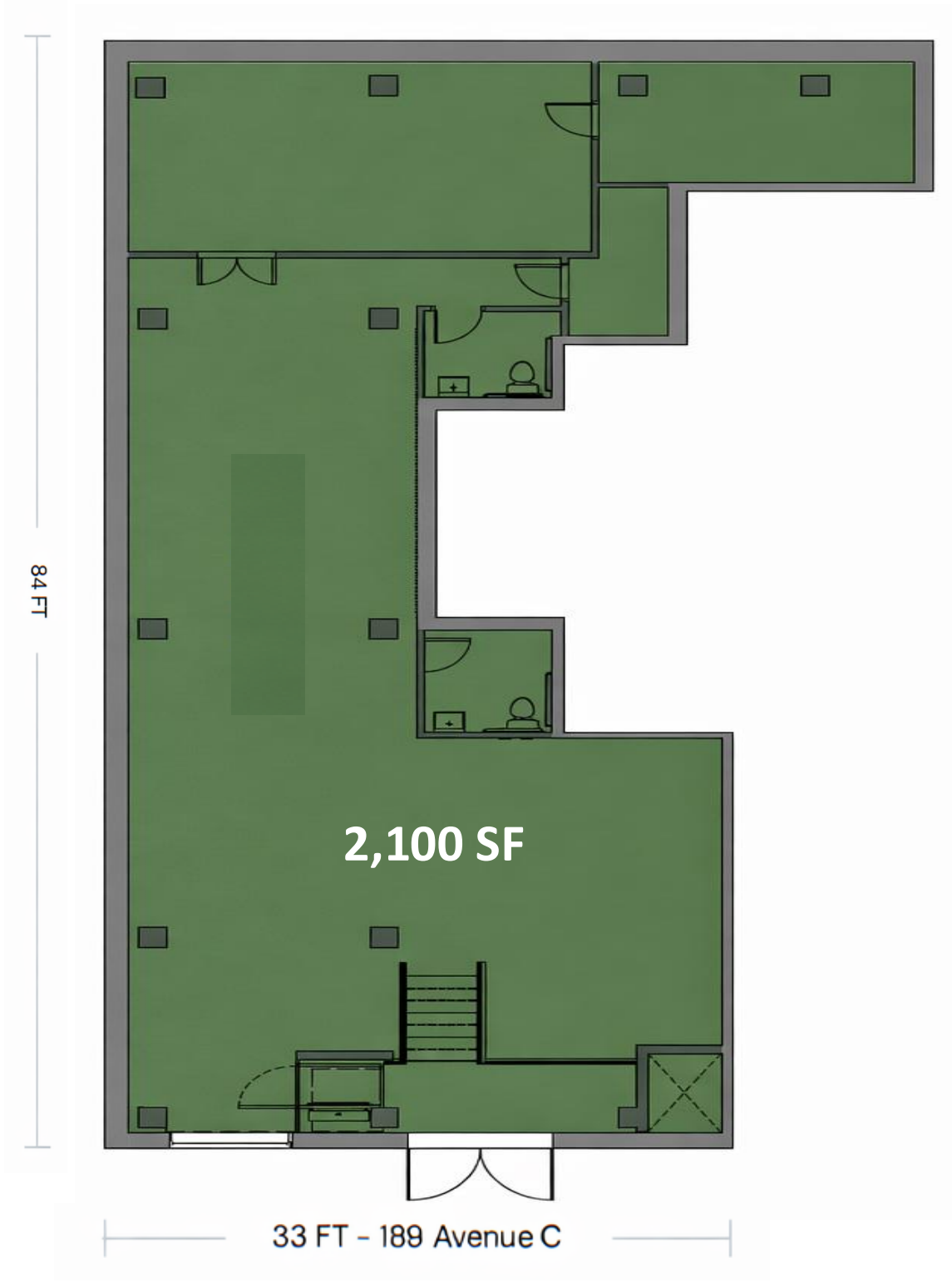
STORAGE ON EAST 12TH ST

INTERIOR PHOTOS

189 AVENUE C



GROUND FLOOR FLOOR PLAN

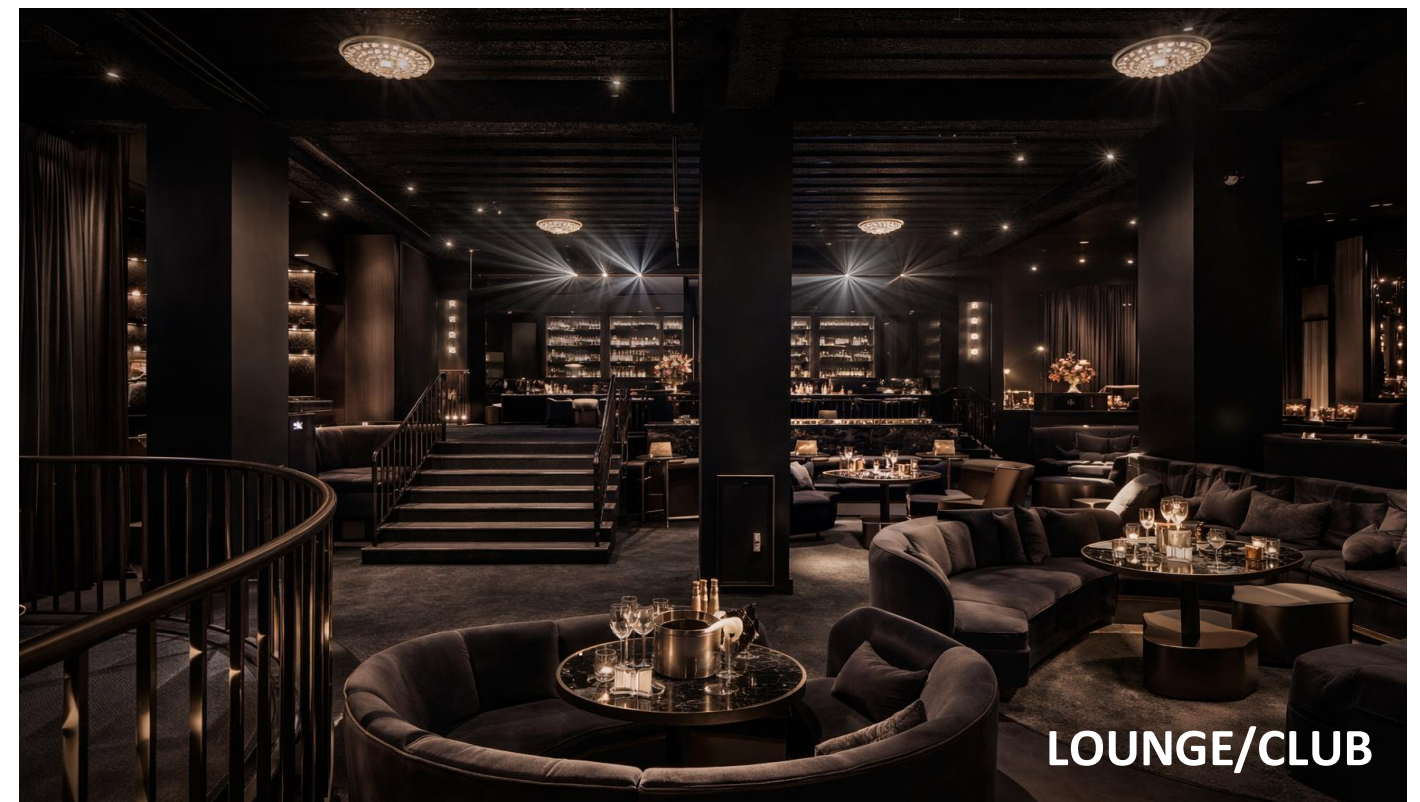


STORAGE FLOOR PLAN



VISUALIZE YOUR CONCEPT

189 AVENUE C



FOR MORE INFORMATION,
PLEASE CONTACT:

Marc Joseph

Senior Associate

347.569.2267

marc@aranyc.com

Aaron Aziz

Principal

516.355.8018

aaron@aranyc.com



224 West 35th Street; Suite 705
www.aranyc.com | (646) 885-7274